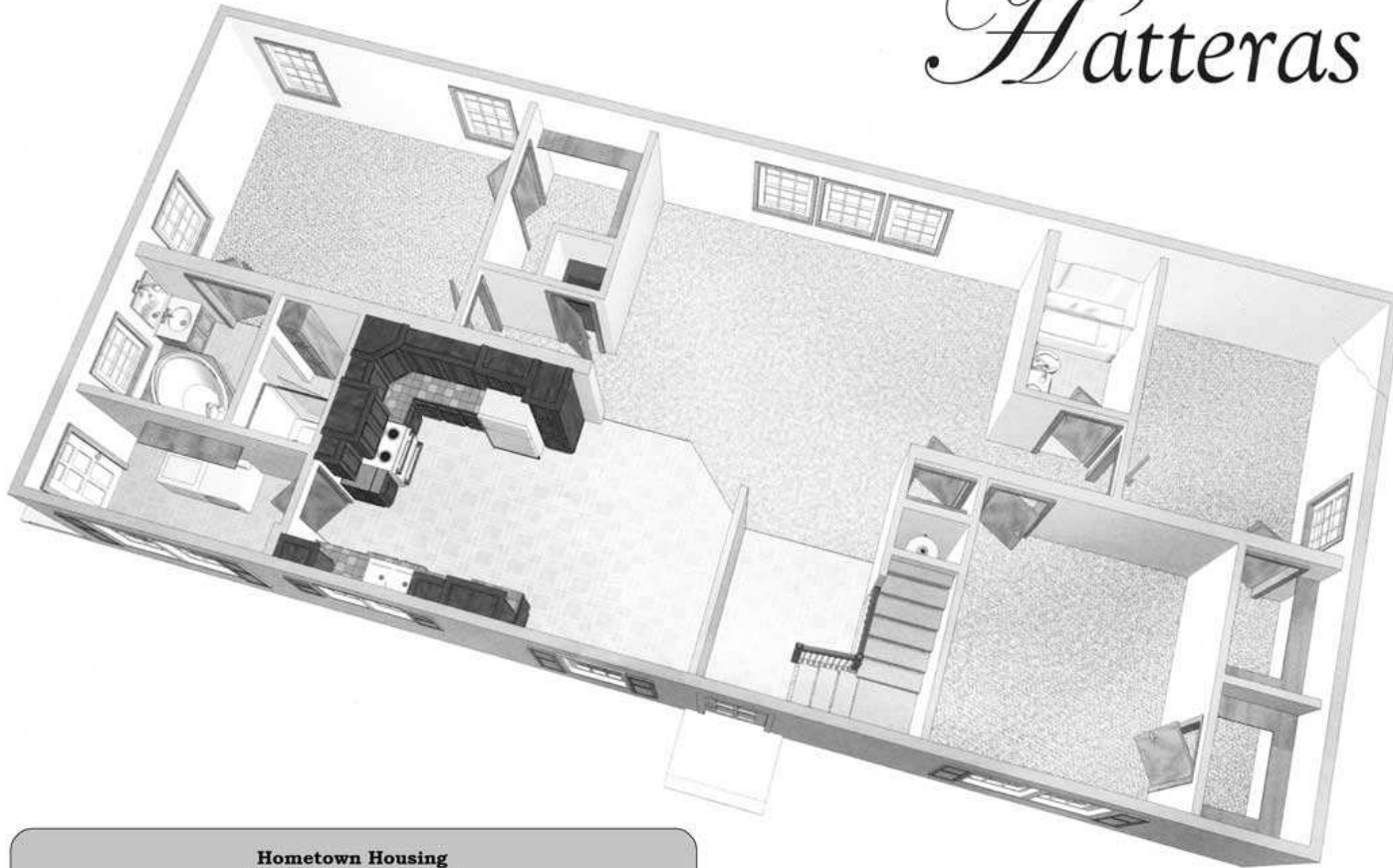


Hometown Housing

presents the *Hatteras*



Hatteras



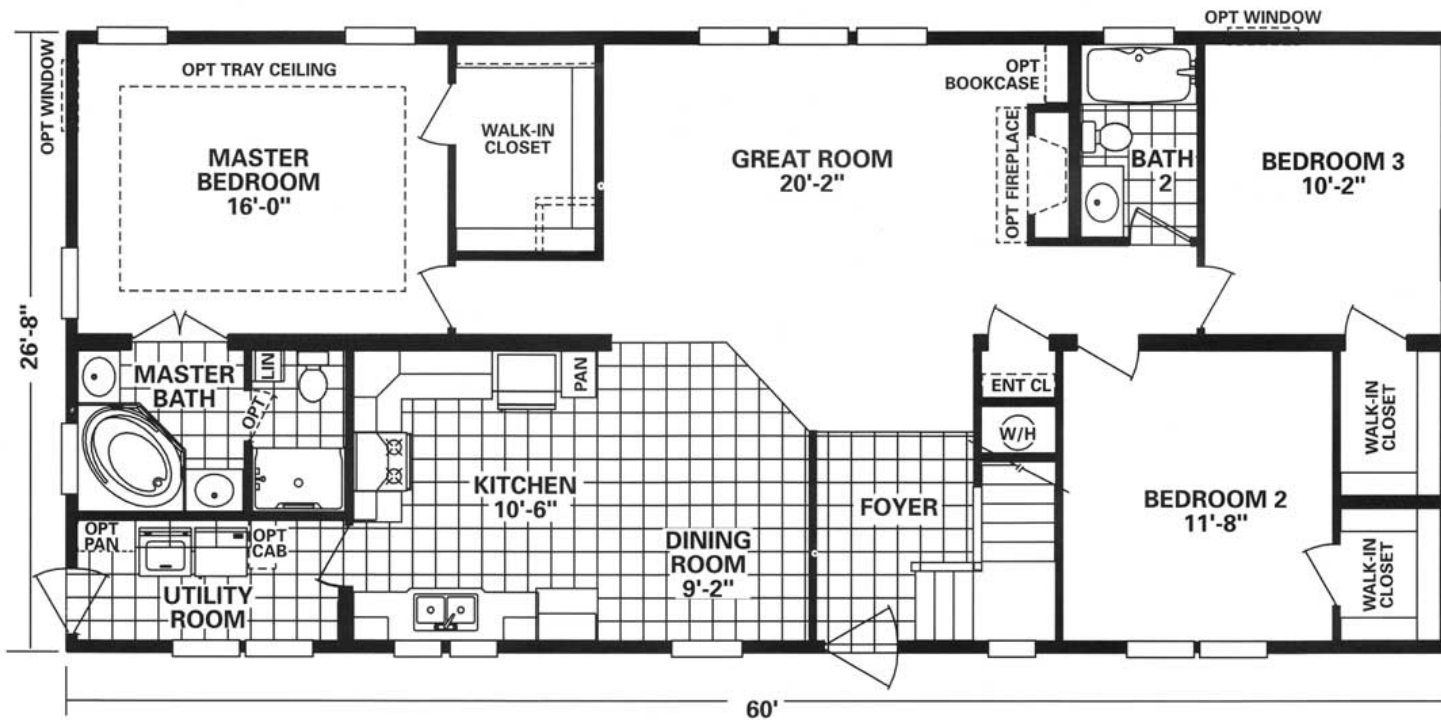
Hometown Housing

2008 E. Roosevelt Blvd.

Monroe, NC 28112 - (Across the street from Tyson Foods on Hwy. 74)

704-225-8850 Phone - 704-225-8480 Fax

info@choosehometown.com - www.ChooseHometown.com



Hometown Housing
 2008 E. Roosevelt Blvd.
 Monroe, NC 28112 - (Across the street from Tyson Foods on Hwy. 74)
 704-225-8850 Phone - 704-225-8480 Fax
 info@choosehometown.com - www.ChooseHometown.com

First Floor: 1600 Sq. Ft.
Second Floor Bonus Area: 697 Sq. Ft. (Std.)
Dormer: 31.25 Sq. Ft. (Opt.)

Chateau Elan Hatteras Design Features

FLOOR SYSTEM

2x10 Joist 16" OC
Double Rim Joist on Sides
Center Girder Beam
3/4" OSB Floor Decking
Perimeter Floor Registers

FLOOR COVERINGS

Entry Foyer
Armor Brite Linoleum-Kitchen, Dining, Laundry
Room, Bathrooms
25 oz Carpet

EXTERIOR WALL SYSTEM

2x6 Perimeter Exterior Walls Studs 16" OC
7/16 OSB Sheathing on Exterior Wall
9" Walls
Georgia Pacific Vision Pro Vinyl Lap Siding
14" Raised Panel Shutters Front of Home
2 Exterior Hose Bibs

EXTERIOR DOORS & WINDOWS

36" Steel Front Door with Full View Storm Door
32" 9 Light Back Door with Storm Door
Insulated Vinyl Windows with Low-E Glass

ROOF SYSTEM

9/12 Roof Trusses
7/16 OSB Roof Decking
Owens Corning "Oakridge" Architecture Shingles
Continuous Ridge Ventilation System
Perforated Vented Soffit

INSULATION

Floor - R-19
Walls - R-19
Roof R-30 Blown Cellulose

INTERIOR

2-Panel Arched Doors with Mortised Hinges Privacy
Locks on Bathrooms
2-1/4" Door & Window Casing
5-3/8" Baseboard
1/2" Drywall Throughout
Textured Drywall Ceiling
Interior Walls and Ceiling are Primed Painted
2" Faux Window Blinds
5-1/4" Crown Molding

KITCHEN

Natural Oak Cabinets
Offset Cabinet Design
42" Overhead Cabinets with Adjustable Shelves
Hardwood Raised Panel Doors
Drawer Over Door Base Cabinets
Refrigerator Overhead Cabinet
Cabinet Crown Molding
Concealed Cabinet Door Hinges
Satin Brushed Nickel Pulls & Knobs
White Hi-Lo Kitchen Sink
Moen Single Lever Faucet with Spray
Light Over Kitchen Sink
Recessed Can Lighting
Fluorescent Lighting Under Overhead Cabinets
Overhead Utility Room Cabinets

BATHROOMS

Master Bathroom - Deep Oval Corner Tub with
Separate Shower and Glass Door
60" Fiberglass Tub/Shower with Glass Doors
Porcelain Elongated Commode
Moen Single Lever Faucets
Porcelain Vanity Sink
Light Over Vanity

ELECTRICAL

Electrical Wiring State Code Compliant
200 Amp Electrical Service
Ground Fault Protected Receptacles Provided in
Kitchen, Bathrooms, and Exterior Locations
Smoke Detector with Built In Battery Backup
Dryer Receptacle
Exterior Receptacle
Elegant Interior Light Fixtures Include: Morning
Room, Kitchen, Bedrooms, Bathrooms, Laundry
Room, and Halls
Light at Each Exterior Door
Phone Jack: Kitchen, Living Room and Master
Bedroom

**CONSTRUCTION: Chateau Elan Homes
builds to comply with nationally accepted
building codes.**

Because our company has a continuous product update process, specifications, floor plan lay-out and dimensions shown on this literature are subject to change without notice or obligations. Construction and design specifications as well as features presented are conceptual, therefore should not be used as actual construction data, and may not be offered in all series or models. Our builder will provide accurate, up-to-date information on available options and specifications for your home.

Hometown Housing
2008 E. Roosevelt Blvd.
Monroe, NC 28112 - (Across the street from Tyson Foods on Hwy. 74)
704-225-8850 Phone - 704-225-8480 Fax
info@choosetown.com - www.Choosetown.com